



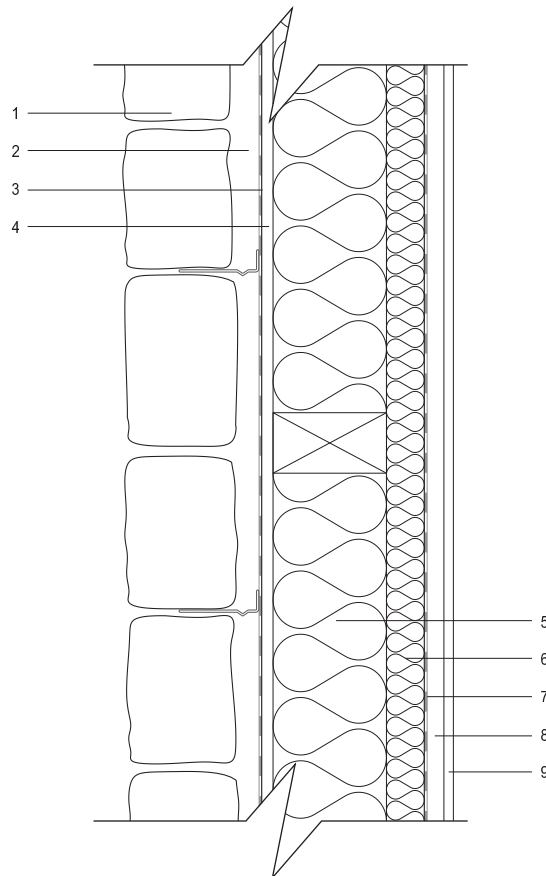
Lantoom Quarry Dobwalls Liskeard Cornwall PL14 4LR

tel. 01579 308234

fax. 08707 062580

## EXAMPLE CONSTRUCTION DETAIL - Timber Frame with Sheathing Board 1:10

1. masonry veneer on wall ties\*
2. cavity (typical 25mm, min 12mm)
3. water barrier (building paper of 'breather' type BS4016)
4. external grade plywood sheathing board
5. timber frame with insulation infill
6. rigid insulation
7. vapour check
8. 25mm service cavity
9. 12.5mm plasterboard internal finish



\* wall ties: recommended spacing 900mm horizontal, 450mm vertical (see BS 5628), type determined in accordance with BS 1243 and BS 8298

NOT FOR CONSTRUCTION - details are for illustrative purposes only; particular dimensions, layering of materials etc. should be determined by the design aims and structural requirements of the specific project